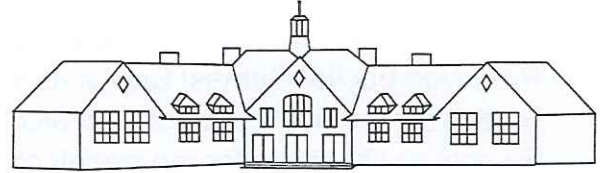


Glebe

Newsletter



www.glebe.derbyshire.sch.uk

Friday 27th June 2025

Girls Cricket

Girls Cricket Team: Leonie, Pearl, Ellie, Thea, Rylee, Kacie, Hollie and Mimi.

On Wednesday the girls Cricket team travelled to Denby Cricket Club to take part in the Amber Valley Girls Cricket Competition. The girls played 3 matches and grew in confidence as the tournament progressed. All the matches were played in great spirit and I was proud of how the girls encouraged and supported each other. It reminded me of my favourite quote: "Do you know what my favourite part of the game is? The opportunity to play." All the girls enjoyed playing and their match play and awareness had improved by the end of the competition. Hopefully this will have given them a taste of cricket for the future. Well done to all and thank you to the support from all the parents. Mrs Watson.

Brigg Sports Day

On Friday a team of Year 6 Mini Leaders went to the Brigg Infants School to help with their Sports Days. They set up equipment, supported the children doing their activities and kept scores during the event. Mrs Spencer was so impressed with their maturity and what a great help they were. Well done to all the leaders who helped. A credit to our school. Mrs Watson.

HAF Holiday Camps

AVSSP are again delighted to be able to offer children in your school FREE Holiday Camp places in the upcoming Summer holidays.

AVSSP Holiday camps consist of a range of activities, sports and enrichment opportunities to engage children in happy, healthy activity during the holidays. Our holiday camps are not only a great way for children to socialise and remain physically active during the summer break but they also allow children to experience new activities and make new friends in a safe, nurturing environment.

All venues are led by experienced, qualified sports professionals with AVSSP's robust safeguarding procedures in place.

Places are available from Monday 28th July to Friday 22nd August at the following high-quality venues:

Alfreton Leisure Centre
Belper Leisure Centre
Ripley Leisure Centre
William Gregg VC Leisure Centre (Heanor)

All Pupil Premium students aged 5-11 are eligible to access our HAF places free of charge.

Bookings are only available through our website and can be accessed via the link below:

www.avssp.co.uk/hafbooking-j28a22

Summer Fair

Time is flying and our annual Summer Fair is approaching. It will be held on Thursday 10th July at Glebe 1:30-3:30pm. We will require donations of:

- Cakes (these can be home-made or shop bought)
- Pre-loved teddies
- Tombola Prizes (anything you want to re-gift/donate)
- Pre loved books/ Games/ Bric- a -brac
- Bottles for the bottle tombola (no alcohol please)
- Sweets or chocolate for the sweet/ chocolate tombola

Cakes can be brought in on the day and other donations the week beginning 7th July. Thank you in advance for your support.

Week Commencing: 30th June 2025

Monday 30th June	Mount Cook Residential Year 6
Tuesday 1st July	Mount Cook Residential Year 6 Last Year 4 swimming
Wednesday 2nd July	Mount Cook Residential Year 6 returns 3.30pm – 4.30pm Dance Year 5 3.30pm – 4.30pm Boxercise Year 4
Thursday 3rd July	3.30pm- 4.30pm Podcast Club Year 5 FGS Y5&Y6 Open Evening 5pm-7pm
Friday 4th July	Maths Day – Parents session 11am

Extended Day

We still have places available for Breakfast Club if you need to get to work early, Monday to Friday 7:30–8:45am each morning at a cost of £3.50 per session for Glebe children. You do not need to attend the whole week, just the days you require. Please book places in advance by Thursday the week before through SchoolMoney. Breakfast items such as toast, croissants, cereal, waffles, pancakes, yoghurts and fruit juice all available.

Please do not bring your child to Breakfast Club unless they are booked in as they are not guaranteed a place. Any problems booking them in please contact the office on 01773 811304. Thank you.

After-School Club

After school club run by JPAC, every day, 3:30 to 6pm. JPAC Club contact number: 07971957839 To book, please visit jpac.ipalbookings.com

Online Safety

We will be sharing a weekly online safety resource from the National College as part of the #WakeUpWednesday initiative. See the school website under Parents tab, Online Safety

Help & Support

Senior Designated Safeguarding Lead contact details

Headteacher: Steve Watson Tel 01773 811304 headteacher@glebe.derbyshire.sch.uk or safeguarding@glebe.derbyshire.sch.uk

- **Children’s Carers Support Group**

Useful information regarding the Children’s Carers Support Group is posted on the school website under the News and Events tab, Letters Home.

- **Starting Point and Call Derbyshire**

Tel 01629 5330190 24/7, 365 days Derbyshire contact and referral service for concerns that a child is suffering or at risk of significant harm.

- **DCC Child Protection and Safeguarding Team**

Tel 01629 535353 If you require any professional advice or have any questions at all relating to

a safeguarding issue.

- **Derbyshire Domestic Abuse Helpline** 08000198668

Free online mental health and wellbeing support, 7 days a week, for parents & carers of children & young people who live in Derby & Derbyshire.

- **The Sleep Charity Helpline**

At any given time up to 40% of adults and 50% of children (this rises to 80% with a SEND diagnosis) have difficulties with their sleep. Yet in a recent survey, almost 60% of adults felt there was a lack of support for sleep issues. Sleep problems can leave people feeling isolated and lonely.

Our free helpline is run by trained sleep advisors, many of whom are specialists in working with SEND. We can talk to young people directly, or parents (we can also talk to adults, including older people, about their sleep issues).

The helpline is open 5 times a week, Monday, Tuesday, Thursday evenings 7-9pm, and Monday, Wednesday mornings 9-11am. The number is 03303 530 541.

You can read more here: <https://thesleepcharity.org.uk/national-sleep-helpline/>

- **Free School Meals**

Derbyshire County Council website has a link that can provide an instant eligibility check for Free School Meals.

- **Is This Ok?**

Is This Ok? is a free, anonymous, and confidential service, bringing trained professionals together to provide support to young people through a chat service.

Young people don't need to provide their name and we don't need to know their address- which we know is important for them. www.isthisok.org.uk

Derby and Derbyshire Emotional Health and Wellbeing

This site provides a wealth of information for both professionals and families.

Please find the link below to the community updates.

[Derby & Derbyshire - Emotional Health & Wellbeing](http://derbyandderbyshireemotionalhealthandwellbeing.org.uk)
(derbyandderbyshireemotionalhealthandwellbeing.org.uk)

INSET DAYS 2025/2026

4th September 2025, 5th September 2025, 3rd November 2025, 5th January 2026 & 26th June 2026.

Diary Dates

08.07.2025 Mini Police Graduation, Postmill – Year 5

10.07.2025 Glebe Summer Gala 1.30pm – 3.30pm

11.07.2025 Yorkshire Wildlife Park trip – Year 5

15.07.2025 Year 6 Performance – Postmill

16.07.2025 Transition Day

18.07.2025 French Day

18.07.2025 Seaside Special themed school lunch

24.07.2025 Last Day of Term

What Parents & Educators Need to Know about NINTENDO SWITCH 2

Nintendo launched its Switch 2 games console in early June 2025 – its first new console in eight years. While it builds on the original's success by remaining compatible with certain existing games, it also adds powerful hardware and new features like GameChat and a USB-C camera. As more children look to upgrade, it's important to understand how this new console might affect their play and safety.

WHAT ARE THE RISKS?

EASIER TO ACCESS MATURE CONTENT



Despite Nintendo's reputation for family-friendly titles, mature games like Cyberpunk 2077 and Hitman have been released onto the platform. With the Switch 2's improved performance, developers will be able to port even more mature-rated games. These may appeal to children due to their popularity, but they contain content that is highly unsuitable for young audiences.

GAMECHAT & REAL-TIME VOICE COMMUNICATION



GameChat enables live chatting with up to 12 people, even across different games, with optional video and screen-sharing. Though children under 16 are restricted to chatting only with approved friends, the sheer interactivity could raise privacy concerns or create pressure to remain online longer.

IN-APP & GAME STORE PURCHASES

The Nintendo eShop enables purchases with just a few taps. If payment details are saved and PIN protection is disabled, children may unknowingly make costly purchases – including game add-ons, cosmetic items or entire new releases – without parental approval.

CAMERA COMPATIBILITY & PRIVACY CONCERNS



The optional USB-C camera supports video calling and facial overlays in games; however, this also raises the risk of cyberbullying or the unwanted sharing of personal images. The camera can be disabled, removed or covered, and parental controls are essential to manage how and when it is used.

UNRESTRICTED ONLINE PLAY IN SOME GAMES



While GameChat is one feature, Switch 2 also connects to the broader Nintendo Switch Online service. Many free-to-play titles like Fortnite or Splatoon 4 allow voice or text chat with strangers unless chat settings are adjusted, meaning children could encounter inappropriate language or unwanted contact.

POWERFUL PULL OF FAMILIAR CHARACTERS



Nintendo's mascot, Mario – along with Pikachu, Donkey Kong and others – remains hugely appealing to younger audiences, especially after the success of the recent film, 'The Super Mario Bros. Movie' (2023). These beloved icons are central to Nintendo's branding and often feature in merchandising, adverts and in-game promotions, creating strong emotional attachments in children and a sense of urgency to keep up with their peers.

Advice for Parents & Educators

CHECK RATINGS & USE PARENTAL CONTROLS



Every Switch and Switch 2 game comes with a PEGI age rating. Before buying one, ensure the content matches your child's age. Use the Nintendo Parental Controls app to monitor gameplay, set screen-time limits and manage friend requests.

REVIEW FRIEND LISTS AND CHAT PERMISSIONS



Child profiles are restricted to chatting with approved friends only, but it's good practice to regularly check their friend list and communication settings. Use the Parental Controls app to switch off voice or video chat if necessary.

REMOVE OR RESTRICT PAYMENT METHODS



Avoid accidental spending by unlinking credit cards from the device. Instead, consider adding funds via prepaid eShop cards or requiring a PIN for purchases. Some banking apps can also be set to approve transactions manually.

ENCOURAGE OPEN CONVERSATIONS

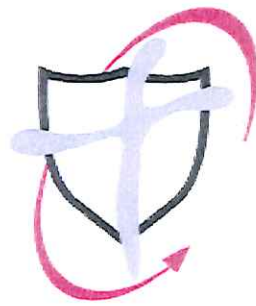


Teach children how to block, report and capture any behaviour or content that makes them uncomfortable. The console's built-in tools allow them to create screenshots and video clips, which can aid in reporting any issues. Keeping an open dialogue helps children feel supported and safe.

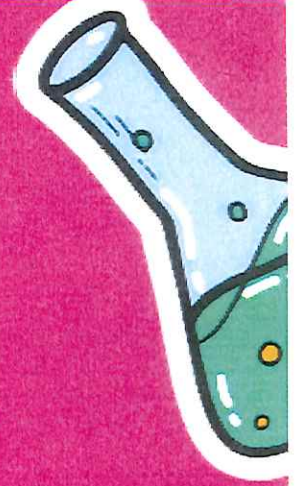
Meet Our Expert

Lloyd Coombes is the Games Editor of Daily Star and has been working in the gaming and tech industry for five years. A regular visitor to the App Store to try out new tools, he's also a parent and understands the importance of online safety. He's also a tech and fitness writer and has been published on sites including IGN, TechRadar, and plenty more.





**FREDERICK
GENT
SCHOOL**



Y5/6 Open Evening

THURSDAY 3RD

JULY

5-7pm



Please use the QR link to register your interest



BACKPACKERS HOLIDAY CLUB



Reception - Year 5
28th July- 1st August (9.30-12)- ALL FREE



GAMES



DANCING



CRIFT



SNACK



SOCIAL



WE ARE NOT PUBLICISING THE LOCATION SO AS TO KEEP THE ATTENDEES SAFE
CONTACT SNCTHOLIDAYCLUB@OUTLOOK.COM

